



## Moduflex+

### 4.5kW DC Power Core

### PRODUCT DESCRIPTION

The Moduflex+ series is designed using Enetek's high efficiency switchmode rectifier modules and intelligent controller that incorporates with the respective load and battery distribution, incoming AC as well as surge protection. The solution can be customized according to the specific requirements.

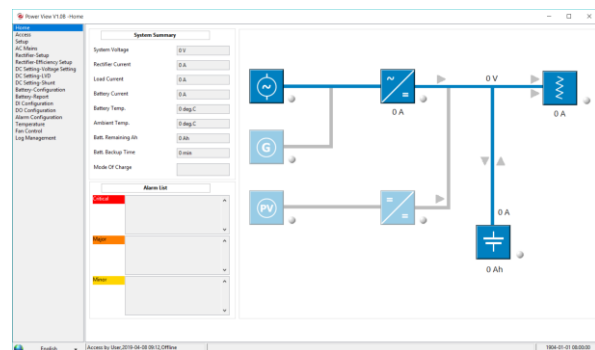
The SMU01 controller with user-friendly design, coupled with its compact size, simple-to-operate interface is highly adaptable and provides the monitoring capabilities for managing and optimizing the system solution.

### KEY FEATURES

- Hot-Swap Rectifier Modules**  
 Rectifier modules are hot-swappable and hot-pluggable
- Modular, Scalable Cabinet Design**  
 Flexible installations and capable of parallel cabinets for additional power/distribution
- High Power Density**  
 Reduces footprint
- Highly Efficient @ up to 95%**  
 Reduces losses and lowers operating costs
- Front-to-back Airflow**  
 Unobstructed scalability of shelves
- Excellent EMC Performance**  
 Lower interference and excellent susceptibility
- Wide Input Voltage Range**  
 Continued operation in demanding grid conditions
- Wide Temperature Range**  
 Applications in harsh climatic conditions
- Compliant with Global Standards**  
 Delivers quality, performance and reliability in power solutions.

### APPLICATIONS

- Macro cell BTS
- Microwave
- LTE / WiMax
- FTTX
- Broadband Access
- Optical Fibre Transmission System
- IDC (Internet Data Centres)



## TECHNICAL SPECIFICATIONS

<b>PART NUMBER</b>	<b>SPC40302.1XX</b>
Capacity Range	4.5kW
<b>INPUT SPECIFICATIONS</b>	
Mains Input Configuration	1-Phase 230Vac
Power Factor	≥ 0.99
Frequency	45Hz to 66 Hz
THD	< 5% (50% to 100% load)
Input Protections	Soft Start
	Surge Protection
	Overvoltage Protection
<b>OUTPUT SPECIFICATIONS</b>	
Nominal Output Voltage	24.0Vdc
Output Power	4.5kW
Efficiency	upto 95%
<b>BATTERY DISTRIBUTION</b>	
Battery Low Voltage Disconnect	BLVD @ 200A
Battery Distribution	2 x 63A 1P MCB (Configurable)
<b>LOAD DISTRIBUTION</b>	
Low Low Voltage Disconnect	LLVD is optional
Load Distribution	4 x 18 mm width 6A-63A 1P MCB (Configurable)
<b>CONTROLLER and RECTIFIER TYPE</b>	
Rectifier Module	ETR <sup>+</sup> 1524 range of rectifier modules
Controller Module	SMU01 (refer to datasheet)
<b>ENVIRONMENTAL</b>	
Operating Temperature Range	-20°C to +75°C (de-rates above 55°C)
Storage Temperature Range	-40°C to +85°C
Relative Humidity	Operating: 5% to 90% RH non-condensing
	Storage: 0% to 99% RH non-condensing
Acoustic Noise	≤58dB @ full load, 40°C
<b>PHYSICAL</b>	
Dimensions WxDxH (mm)	482 x 458 x 88.8 (2U)
Net Weight	~10kg (excluding rectifier modules)
<b>DESIGN STANDARDS</b>	
Electrical Safety	EN/IEC62368-1
EMC	ETSI EN 300 386 V1.6.1