



## Moduflex<sup>+</sup>

### 34.8kW DC Power Core

## PRODUCT DESCRIPTION

The Moduflex+ series is designed using Enetek's high efficiency switchmode rectifier modules and intelligent controller that incorporates with the respective load and battery distribution, incoming AC as well as surge protection. The solution can be customized according to the specific requirements.

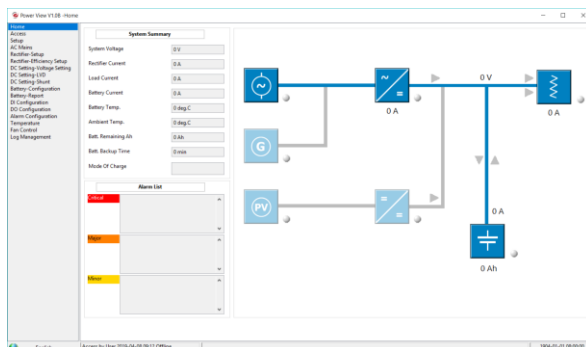
The SMU01 controller with user-friendly design, coupled with its compact size, simple-to-operate interface is highly adaptable and provides the monitoring capabilities for managing and optimizing the system solution.

## APPLICATIONS

- Macro cell BTS
- Microwave
- LTE / WiMax
- FTTX
- Broadband Access
- Optical Fibre Transmission System
- IDC (Internet Data Centres)

## KEY FEATURES

- Hot-Swap Rectifier Modules
- Modular, Scalable Cabinet Design
- High Power Density
- Highly Efficient @ >96.5%
- Front-to-back Airflow
- Excellent EMC Performance
- Wide Input Voltage Range
- Wide Temperature Range
- Compliant with Global Standards



## TECHNICAL SPECIFICATIONS

<b>MODEL</b>	<b>SPC90806.1XX</b>
Capacity Range	34.8kW
<b>INPUT SPECIFICATIONS</b>	
Mains Input Configuration	3-Phase 230Vac ( $\Delta$ ) 3-Phase 400Vac+N (Y)
Power Factor	$\geq 0.99$
Frequency	45Hz to 65Hz
THD	$< 5\%$ (50% to 100% load)
Input Protections	Soft Start
	Surge Protection
	Overvoltage Protection
<b>OUTPUT SPECIFICATIONS</b>	
Nominal Output Voltage	48.0Vdc
Output Power	34.8kW
Efficiency	$>96.5\%$
<b>BATTERY DISTRIBUTION</b>	
Battery Low Voltage Disconnect	BLVD @ 500A
Battery Distribution	4 x 27mm width 80A-125A 1P MCB (Configurable)
<b>LOAD DISTRIBUTION</b>	
Load Low Voltage Disconnect	LLVD is optional
Load Distribution	12 x 18mm width 6A-63A 1P MCB (Configurable)
<b>CONTROLLER and RECTIFIER TYPE</b>	
Rectifier Module	ETR <sup>+</sup> 4348 range of rectifier modules
Controller Module	SMU01 (refer to datasheet)
<b>ENVIRONMENTAL</b>	
Operating Temperature Range	-40°C to +65°C (de-rates above 45°C)
Storage Temperature Range	-40°C to +70°C
Relative Humidity	Operating: 5% to 95% RH non-condensing
	Storage: 0% to 99% RH non-condensing
Acoustic Noise	$\leq 58\text{dB}$ @ full load, 40°C
<b>PHYSICAL</b>	
Dimensions WxDxH (mm)	482 x 390 x 266 (6U)
Net Weight	~25kg (excluding rectifier modules)
<b>DESIGN STANDARDS</b>	
Electrical Safety	EN/IEC62368-1
EMC	ETSI EN 300 386 V2.1.1, EN61000-6-1/-2/-3/-4