



SMU01L

Smart Monitoring Unit

PRODUCT DESCRIPTION

SMU01L is an intelligent controller suitable for use with Enetek's range of telecom rectifiers. It is equipped with a 2.8" LCD display. The simple yet effective controller unit offers a complete power system management function including data acquisition and processing, battery management as well as monitoring and control of the system solution.

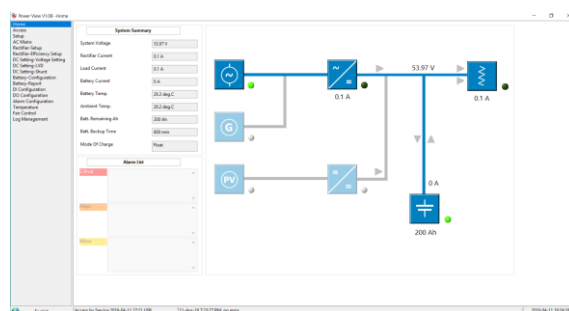
The user-friendly SMU01L controller, coupled with its compact size and easy-to-use interface, is highly adaptable and can be incorporated into small design spaces.

KEY FEATURES

- Control and management for rectifier modules and peripheral devices
- Manages up to 80 x rectifier modules
- Alarm/Data logging @ > 10,000 records
- Multiple language options
- Intelligent energy saving management
- Comprehensive battery management including mid-point monitoring, temperature compensation and capacity testing
- Multiple LVD controls
- Site information management
- 2.8" LCD display with 6 keys for menu navigation
- TCP/IP for remote connection to GUI
- Web-based configuration
- TCP/IP and SNMP interface for remote monitoring

OPTIONAL FEATURES

- AC parameters monitoring module (voltage, current frequency)
- 24-point battery monitoring module c/w 2 x temperature sensor
- Extended DC monitoring module (2 x voltage, 8 x current)
- Extended digital input/output module c/w fan management
- Expandable load/battery fuse sensing module



TECHNICAL SPECIFICATIONS

| PART NUMBER | | 401210.200 |
|--|--|------------|
| Compatibility | Enetek's range of rectifier solutions | |
| SPECIFICATIONS | | |
| Input Voltage Range / Power | 18Vdc to 60Vdc @ 27W | |
| Display | 2.8" LCD | |
| User Interface | 3 x LED, 6 x user buttons | |
| Communication Interface | RS485, TCP/IP (Modbus), SNMP | |
| Operating Temperature Range | -40 to +75°C | |
| Storage Temperature Range | -40 to +85°C | |
| Relative Humidity | Operating: 5%-95% non-condensing; Storage: 0%-99% non-condensing | |
| MTBF | >300,000hrs (Ambient temp of 25°C) | |
| Weight (kg) | < 0.5 | |
| Dimensions (WxHxD) mm | Controller Unit: 108 x 43 x 234 (mm) | |
| | LCD Unit: 170 x 89 x 15 (mm) | |
| SYSTEM INTERFACE | | |
| 1 x Voltage sensing (expansion module available) | 6 x Digital inputs (expansion module available) | |
| 2 x Current sensing (expansion module available) | 6 x Digital outputs (expansion module available) | |
| 2 x Temperature sensing (expansion module available) | Battery mid-point measurement | |
| Up to 2 x LVD | Load/battery fuse monitoring | |
| SYSTEM FEATURES | | |
| AC voltage measurement (via optional module) | User configurable alarms and settings | |
| Alarm grouping and alarm mapping | Auxiliary input and load monitoring | |
| Alarm Logs (> 10,000 events) | User profile configuration | |
| Data logs (> 10,000 logs) | Multi languages Option | |
| Site information and management | Up to 3 levels of password settings | |
| BATTERY FEATURES | | |
| Battery temperature measurement | Low voltage disconnection | |
| Temperature compensated charging | High/low battery voltage | |
| Automatic float/boost charging | High/low battery temperature | |
| Automatic battery capacity test | Optional 24-point measurement | |
| RECTIFIER FEATURES | | |
| Individual rectifier information | Efficiency management (intelligent energy management) | |
| Rectifier current, temperature and status monitoring | Remote control including voltage adjustment | |
| Active current sharing | Overload monitoring | |
| Power limit walk-in | Module position addressing | |
| CONTROL and MONITORING | | |
| Local management through LCD, 3 x LED and 6 x user buttons | Full monitoring and control functions can be accessed locally through the use of the 6 user buttons. | |
| DESIGN STANDARDS (SAFETY) | | |
| EN62368-1 | | |
| DESIGN STANDARDS (EMC) | | |
| EN55032, EN55035 | | |
| DESIGN STANDARDS (OTHERS) | | |
| CE, RoHS compliant | | |